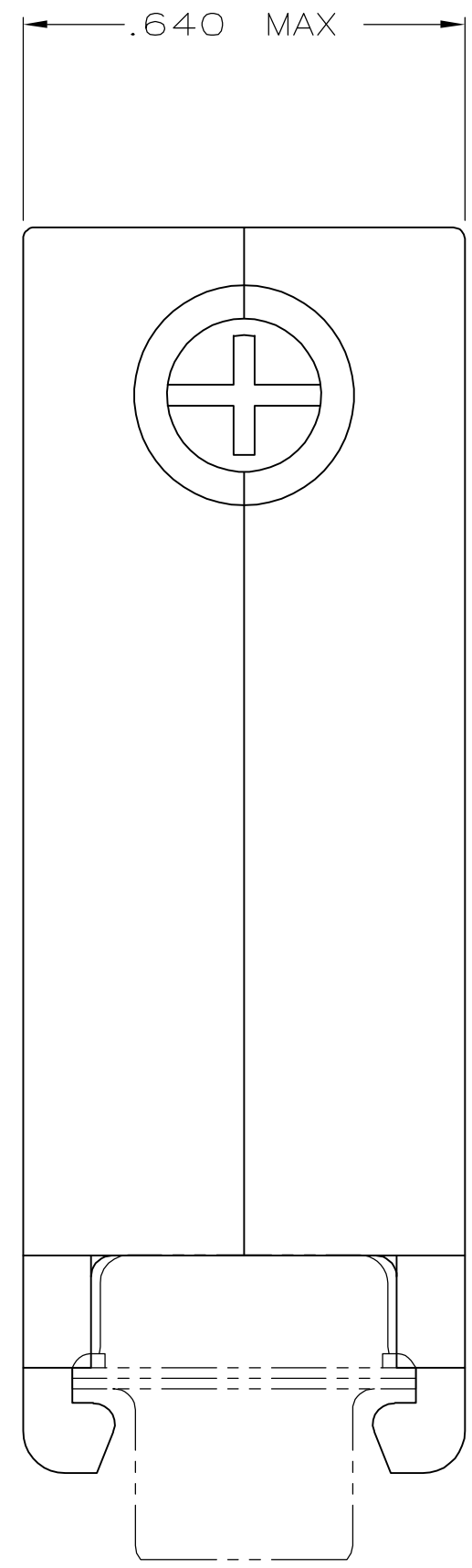
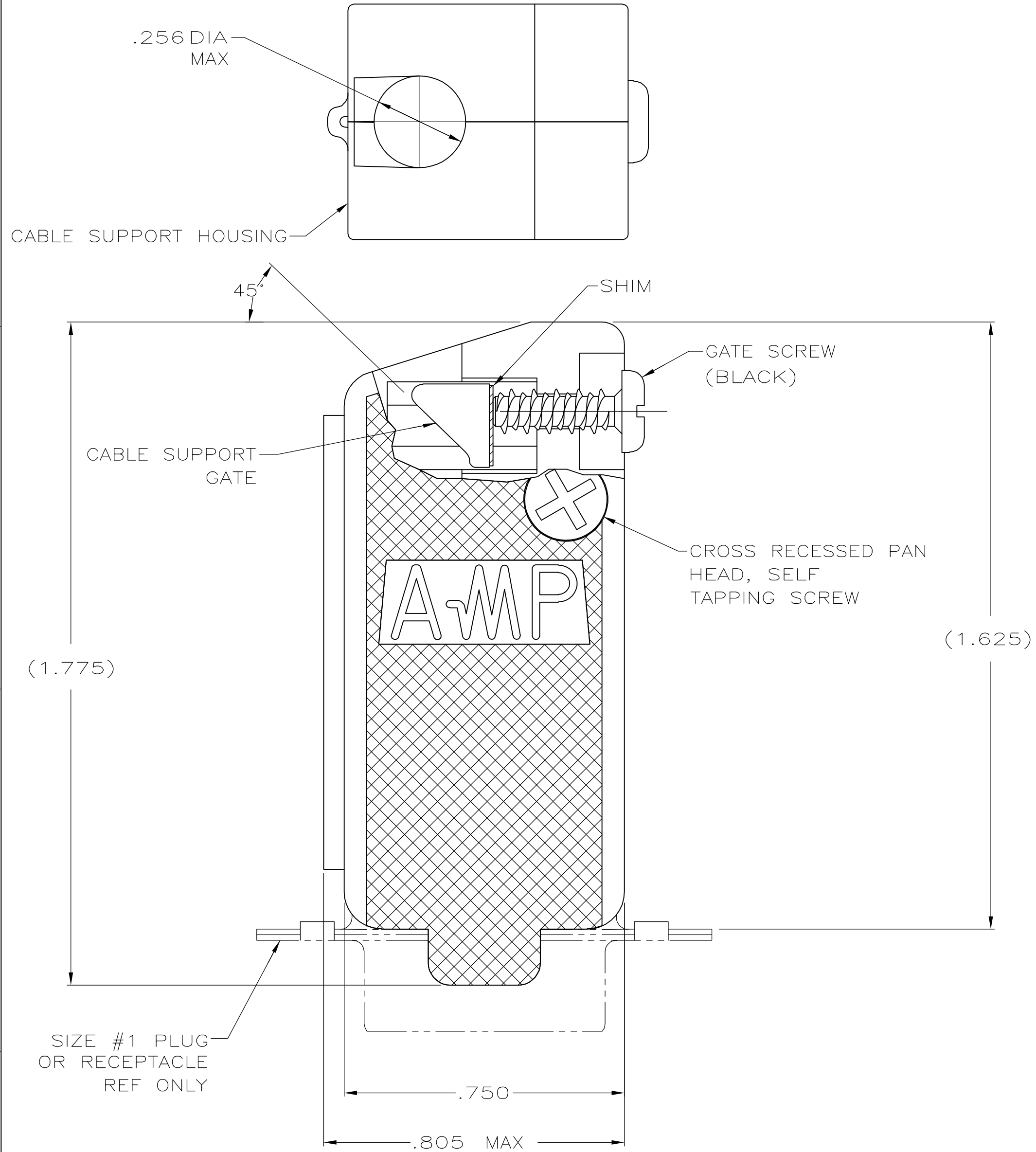


THIS DRAWING IS UNPUBLISHED. RELEASED FOR PUBLICATION
 © COPYRIGHT 2006 BY TYCO ELECTRONICS CORPORATION. ALL RIGHTS RESERVED.

LOC	DIST	REVISIONS			
P	LTR	DESCRIPTION	DATE	DWN	APVD
GP	00	0	RELEASED PER EC 0513-0221-05	22AUG05	RR JG



- 1. PARTS PACKAGED UNASSEMBLED.
- 2 COMPONENTS INDIVIDUALLY BULK PACKED & SHIPPED AS A UNIT PACKAGE KIT.
- 3 MOLDED PARTS: POLYPROPYLENE, BLACK
SHIM: BRASS
SCREWS: COLD ROLLED STEEL
- 4 GATE SCREWS: BLACK ZINC PHOSPHATE,
SELF-TAPPING SCREWS: ZINC PLATED CLEAR CHROMATE COATING.

COMBINATION DRIVE	2	5205729-3
COMBINATION DRIVE	AS SHOWN	5205729-1
SCREW VERSION	PACKAGING	PART NUMBER

THIS DRAWING IS A CONTROLLED DOCUMENT.		DWN R.RICHARDSON 22AUG05	Tyco Electronics Corporation Harrisburg, PA 17105-3608		
DIMENSIONS: INCHES		CHK C. ROHDE 22AUG 05			
TOLERANCES UNLESS OTHERWISE SPECIFIED:		APVD M.WALMSLEY 22AUG05	NAME		
0 PLC ± - 1 PLC ± - 2 PLC ± - 3 PLC ± .005 4 PLC ± - ANGLES ± - FINISH		PRODUCT SPEC	SELF TAPPED 45/180 DEG CABLE SUPPORT CLAMSHELL, SIZE 1 ASSEMBLY, AMPLIMITE HD-20		
MATERIAL 3		APPLICATION SPEC	SIZE A2	CAGE CODE 00779	DRAWING NO C=5205729
		WEIGHT -	RESTRICTED TO	SCALE 4:1	SHEET 1 of 1
		CUSTOMER DRAWING	REV 0		

5205729